

# AUTOPSY ON A DEAD CHURCH MEMBER

# AUTOPSY ON A DEAD CHURCH MEMBER

**“And to the angel of the church in Sardis write, ‘These things says He who has the seven Spirits of God and the seven stars: “I know your works, that you have a name that you are alive, but you are dead.**

Revelation 3:1.



# AUTOPSY ON A DEAD CHURCH MEMBER

“And to the angel of the church in Sardis write, ‘These things says He who has the seven Spirits of God and the seven stars: “I know your works, that you have a name that you are alive, but **you are dead.**”

Revelation 3:1.



# AUTOPSY ON A DEAD CHURCH MEMBER

Possible causes of death:

- Starvation. 1 Peter 2:2; Hebrews 5:12-14; Matthew 5:6.



# AUTOPSY ON A DEAD CHURCH MEMBER

**As newborn babes, desire the pure milk of the word, that you may grow thereby**

1 Peter 2:2.



# AUTOPSY ON A DEAD CHURCH MEMBER

For though by this time you ought to be teachers, you need someone to teach you again the first principles of the oracles of God; and you have come to need milk and not solid food. <sup>13</sup> For everyone who partakes only of milk is unskilled in the word of righteousness, for he is a babe. <sup>14</sup> But solid food belongs to those who are of full age, that is, those who by reason of use have their senses exercised to discern both good and evil.



Hebrews 5:12-  
14.

# AUTOPSY ON A DEAD CHURCH MEMBER

**Blessed are those who hunger and thirst for righteousness, For they shall be filled.**

Matthew 5:6.



# AUTOPSY ON A DEAD CHURCH MEMBER

## Possible causes of death:

- Starvation. 1 Peter 2:2; Hebrews 5:12-14; Matthew 5:6.
- Spiritual Diabetes. Isaiah 30:9-10; Jeremiah 6:14; 2 Timothy 4:3-4.





# AUTOPSY ON A DEAD CHURCH MEMBER

That this is a rebellious people, Lying children, Children who will not hear the law of the Lord; <sup>10</sup> Who say to the seers, Do not see,” And to the prophets, “Do not prophesy to us right things; Speak to us smooth things, prophesy deceits.

Isaiah 30:9-10.



# AUTOPSY ON A DEAD CHURCH MEMBER

**They have also healed the hurt of My people slightly, Saying, 'Peace, peace!' When there is no peace.**

Jeremiah 6:14.



# AUTOPSY ON A DEAD CHURCH MEMBER

For the time will come when they will not endure sound doctrine, but according to their own desires, because they have itching ears, they will heap up for themselves teachers; <sup>4</sup> and they will turn their ears away from the truth, and be turned aside to fables.

2 Timothy 4:3-4.



# AUTOPSY ON A DEAD CHURCH MEMBER

## Possible causes of death:

- Starvation. 1 Peter 2:2; Hebrews 5:12-14; Matthew 5:6.
- Spiritual Diabetes. Isaiah 30:9-10; Jeremiah 6:14; 2 Timothy 4:3-4.
- Sclerosis of the giver. 2 Cor. 9:7; Luke 12:19-20.



# AUTOPSY ON A DEAD CHURCH MEMBER

So let each one give as he purposes in his heart, not grudgingly or of necessity; for God loves a cheerful giver.

2 Corinthians 9:7.



# AUTOPSY ON A DEAD CHURCH MEMBER

And I will say to my soul, “Soul, you have many goods laid up for many years; take your ease; eat, drink, and be merry.”<sup>20</sup> But God said to him, ‘Fool! This night your soul will be required of you; then whose will those things be which you have provided?’

Luke 12:19-20.



# AUTOPSY ON A DEAD CHURCH MEMBER

## Possible causes of death:

- Starvation. 1 Peter 2:2; Hebrews 5:12-14; Matthew 5:6.
- Spiritual Diabetes. Isaiah 30:9-10; Jeremiah 6:14; 2 Timothy 4:3-4.
- Sclerosis of the giver. 2 Cor. 9:7; Luke 12:19-20.
- Sunday Sickness. John 4:23-24; Hebrews 10:24-25.



# AUTOPSY ON A DEAD CHURCH MEMBER

But the hour is coming, and now is, when the true worshipers will worship the Father in spirit and truth; for the Father is seeking such to worship Him. <sup>24</sup> God is Spirit, and those who worship Him must worship in spirit and truth.”

John 4:23-24.





# AUTOPSY ON A DEAD CHURCH MEMBER

And let us consider one another in order to stir up love and good works,  
<sup>25</sup> not forsaking the assembling of ourselves together, as is the manner of  
some, but exhorting one another, and so much the more as you see the  
Day approaching.

Hebrews 10:24-  
25.



# AUTOPSY ON A DEAD CHURCH MEMBER

Skull Bone - Too Big. →



# AUTOPSY ON A DEAD CHURCH MEMBER

## BIG HEAD

**Pride goes before destruction, And a haughty spirit before a fall.**

Proverbs 16:18.



# AUTOPSY ON A DEAD CHURCH MEMBER

## BIG HEAD

**Therefore let him who thinks he stands take heed lest he fall.**

1 Corinthians  
10:12.



# AUTOPSY ON A DEAD CHURCH MEMBER

## BIG HEAD

A proud and haughty man—“Scoffer” is his name; He acts with arrogant pride.



Proverbs 21:24.

# AUTOPSY ON A DEAD CHURCH MEMBER

## BIG HEAD

**Not a novice, lest being puffed up with pride he fall into the same condemnation as the devil.**



1 Timothy 3:6.

# AUTOPSY ON A DEAD CHURCH MEMBER

Skull Bone - Too Big.

Nose Bone - Extreme Wear.



# AUTOPSY ON A DEAD CHURCH MEMBER

## BUSYBODY

But let none of you suffer as a murderer, a thief, an evildoer, or as a busybody in other people's matters.

1 Peter 4:15.





# AUTOPSY ON A DEAD CHURCH MEMBER

## BUSYBODY

And besides they learn to be idle, wandering about from house to house, and not only idle but also gossips and busybodies, saying things which they ought not.

1 Timothy 5:13.



# AUTOPSY ON A DEAD CHURCH MEMBER

Skull Bone - Too Big.

Nose Bone - Extreme Wear.

Jaw Bone - Extreme Wear.



# AUTOPSY ON A DEAD CHURCH MEMBER

## BIG MOUTH

**If anyone among you thinks he is religious, and does not bridle his tongue but deceives his own heart, this one's religion is useless.**

James 1:26.



# AUTOPSY ON A DEAD CHURCH MEMBER

## BIG MOUTH

And the tongue is a fire, a world of iniquity. The tongue is so set among our members that it defiles the whole body, and sets on fire the course of nature; and it is set on fire by hell. <sup>7</sup> For every kind of beast and bird, of reptile and creature of the sea, is tamed and has been tamed by mankind. <sup>8</sup> But no man can tame the tongue. It is an unruly evil, full of deadly poison.



James 3:6-8.

# AUTOPSY ON A DEAD CHURCH MEMBER

## BIG MOUTH

In the multitude of words sin is not lacking, But he who restrains his lips is wise.

Proverbs 10:19.



# AUTOPSY ON A DEAD CHURCH MEMBER

## BIG MOUTH

Even a fool is counted wise when he holds his peace; When he shuts his lips, he is considered perceptive.

Proverbs 17:28.



# AUTOPSY ON A DEAD CHURCH MEMBER

Skull Bone - Too Big.

Nose Bone - Extreme Wear.

Jaw Bone - Extreme Wear.

Neck Bone - Stiff.



# AUTOPSY ON A DEAD CHURCH MEMBER

## STIFF-KNECKED

**“You stiff-necked and uncircumcised in heart and ears! You always resist the Holy Spirit; as your fathers did, so do you.**

Acts 7:51.





# AUTOPSY ON A DEAD CHURCH MEMBER

## STIFF-KNECKED

Now do not be stiff-necked, as your fathers were, but yield yourselves to the Lord; and enter His sanctuary, which He has sanctified forever, and serve the Lord your God, that the fierceness of His wrath may turn away from you.



2 Chronicles  
30:8.

# AUTOPSY ON A DEAD CHURCH MEMBER

## ALWAYS LOOKING BACK

But Jesus said to him, “No one, having put his hand to the plow, and looking back, is fit for the kingdom of God.”



Luke 9:62.

# AUTOPSY ON A DEAD CHURCH MEMBER

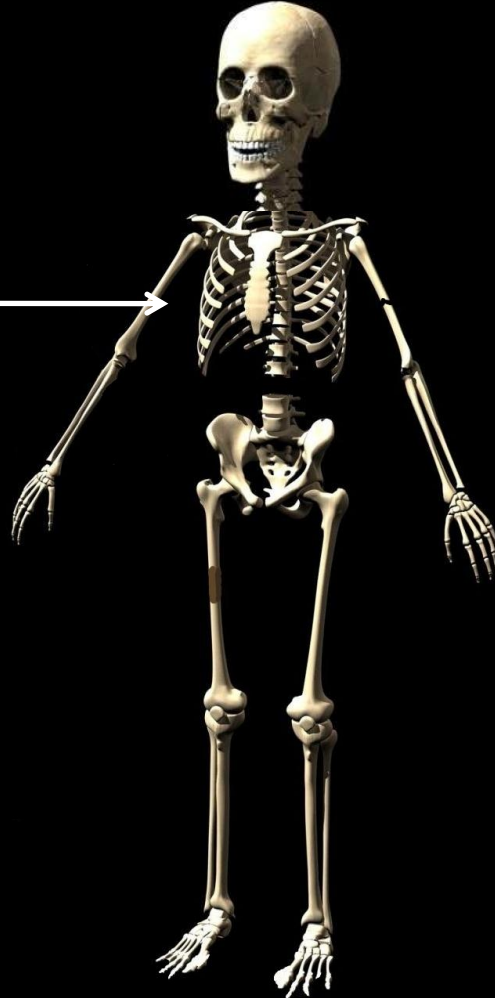
Skull Bone - Too Big.

Nose Bone - Extreme Wear.

Chest Bones - signs of t.b.

Jaw Bone - Extreme Wear.

Neck Bone - Stiff.



# AUTOPSY ON A DEAD CHURCH MEMBER

## TOO BUSY

**“No one can serve two masters; for either he will hate the one and love the other, or else he will be loyal to the one and despise the other. You cannot serve God and mammon.**

Matthew 6:24.



# AUTOPSY ON A DEAD CHURCH MEMBER

## TOO BUSY

But seek first the kingdom of God and His righteousness, and all these things shall be added to you.

Matthew 6:33.



# AUTOPSY ON A DEAD CHURCH MEMBER

## TOO BUSY

**He who loves father or mother more than Me is not worthy of Me. And he who loves son or daughter more than Me is not worthy of Me. <sup>38</sup> And he who does not take his cross and follow after Me is not worthy of Me. <sup>39</sup> He who finds his life will lose it, and he who loses his life for My sake will find it.**



Matthew 10:37-  
39.

# AUTOPSY ON A DEAD CHURCH MEMBER

Skull Bone - Too Big.

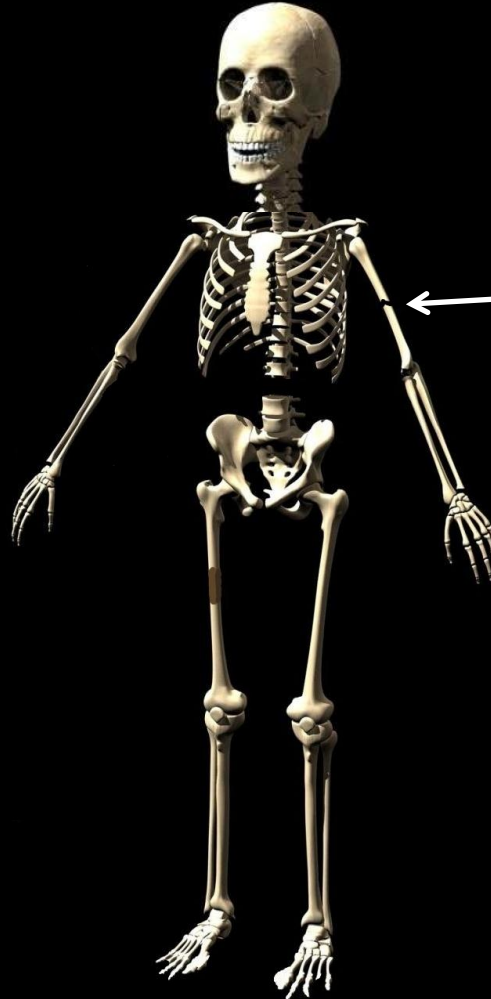
Nose Bone - Extreme Wear.

Chest Bones - signs of t.b.

Jaw Bone - Extreme Wear.

Neck Bone - Stiff.

Arm Bone - Broken.



# AUTOPSY ON A DEAD CHURCH MEMBER

## PATting HIMSELF ON THE BACK

So likewise you, when you have done all those things which you are commanded, say, 'We are unprofitable servants. We have done what was our duty to do.'"



Luke 17:10.



# AUTOPSY ON A DEAD CHURCH MEMBER

## PATting HIMSELF ON THE BACK

**But when you do a charitable deed, do not let your left hand know what your right hand is doing, <sup>4</sup> that your charitable deed may be in secret; and your Father who sees in secret will Himself reward you openly.**



Matthew 6:3-4.

# AUTOPSY ON A DEAD CHURCH MEMBER

Skull Bone - Too Big.

Nose Bone - Extreme Wear.

Chest Bones - signs of t.b.

Finger bones - Extreme Wear.



Jaw Bone - Extreme Wear.

Neck Bone - Stiff.

Arm Bone - Broken.

# AUTOPSY ON A DEAD CHURCH MEMBER

## FINGER POINTING

And why do you look at the speck in your brother's eye, but do not consider the plank in your own eye? <sup>4</sup> Or how can you say to your brother, 'Let me remove the speck from your eye'; and look, a plank is in your own eye? <sup>5</sup> Hypocrite! First remove the plank from your own eye, and then you will see clearly to remove the speck from your brother's eye.



Matthew 7:3-5.

# AUTOPSY ON A DEAD CHURCH MEMBER

## FINGER POINTING

**Examine yourselves as to whether you are in the faith. Test yourselves. Do you not know yourselves, that Jesus Christ is in you?—unless indeed you are disqualified.**



2 Corinthians  
13:5.

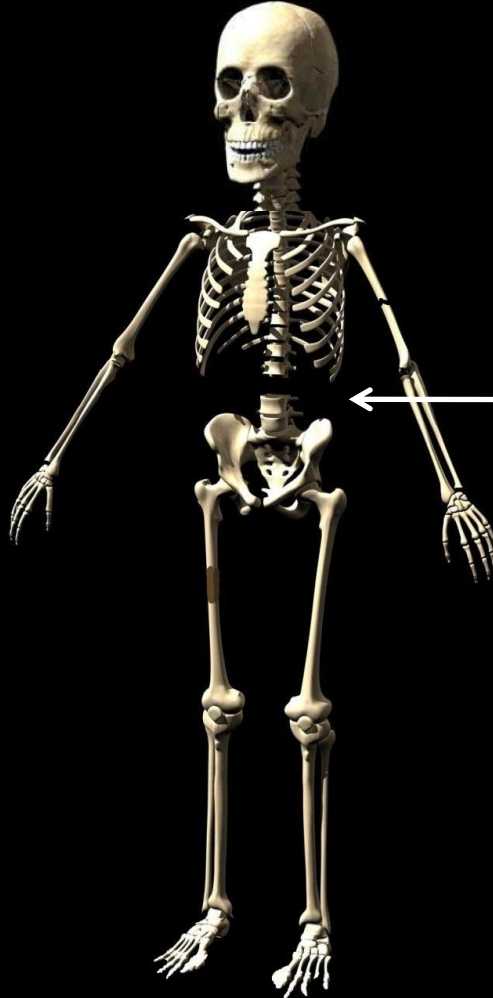
# AUTOPSY ON A DEAD CHURCH MEMBER

Skull Bone - Too Big.

Nose Bone - Extreme Wear.

Chest Bones - signs of t.b.

Finger bones - Extreme Wear.



Jaw Bone - Extreme Wear.

Neck Bone - Stiff.

Arm Bone - Broken.

Back Bone - Missing.

# AUTOPSY ON A DEAD CHURCH MEMBER

## NO BACKBONE

Therefore I remind you to stir up the gift of God which is in you through the laying on of my hands. <sup>7</sup> For God has not given us a spirit of fear, but of power and of love and of a sound mind.



2 Timothy 1:6-7.

# AUTOPSY ON A DEAD CHURCH MEMBER

## NO BACKBONE

**I charge you therefore before God and the Lord Jesus Christ, who will judge the living and the dead at His appearing and His kingdom: <sup>2</sup> Preach the word! Be ready in season and out of season. Convince, rebuke, exhort, with all longsuffering and teaching.**



2 Timothy 4:1-2.

# AUTOPSY ON A DEAD CHURCH MEMBER

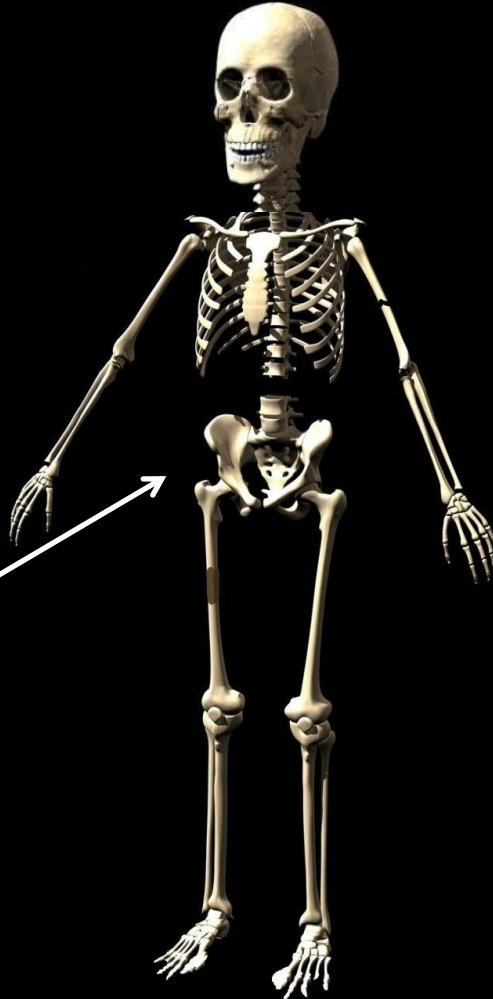
Skull Bone - Too Big.

Nose Bone - Extreme Wear.

Chest Bones - signs of t.b.

Finger bones - Extreme Wear.

Hip Bone - Out of Joint.



Jaw Bone - Extreme Wear.

Neck Bone - Stiff.

Arm Bone - Broken.

Back Bone - Missing.



# AUTOPSY ON A DEAD CHURCH MEMBER

## STRADDLING THE FENCE

With it we bless our God and Father, and with it we curse men, who have been made in the similitude of God. <sup>10</sup> Out of the same mouth proceed blessing and cursing. My brethren, these things ought not to be so. <sup>11</sup> Does a spring send forth fresh water and bitter from the same opening? <sup>12</sup> Can a fig tree, my brethren, bear olives, or a grapevine bear figs? Thus no spring yields both salt water and fresh.



James 3:9-12.

# AUTOPSY ON A DEAD CHURCH MEMBER

## STRADDLING THE FENCE

And Elijah came to all the people, and said, “How long will you falter between two opinions? If the Lord is God, follow Him; but if Baal, follow him.” But the people answered him not a word.



1 Kings 18:21.

# AUTOPSY ON A DEAD CHURCH MEMBER

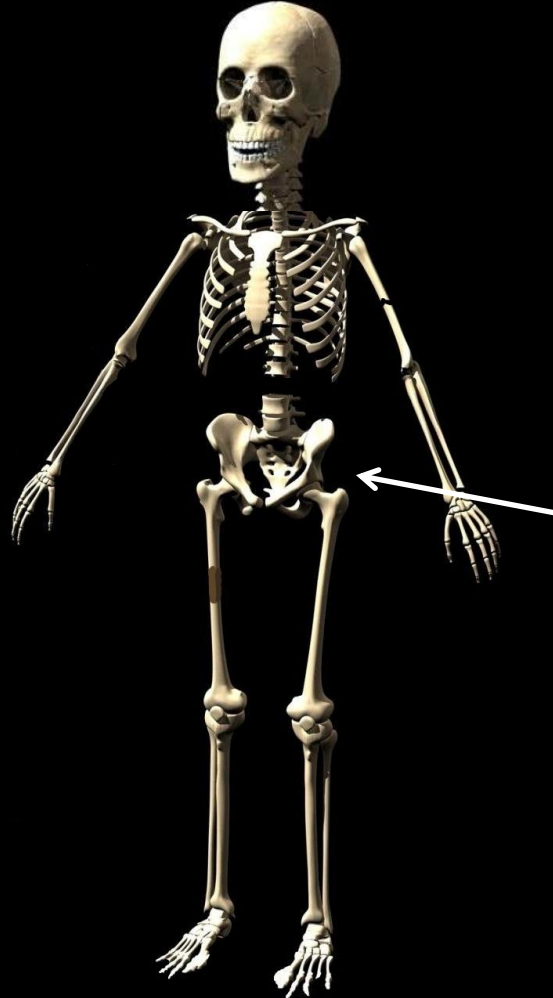
Skull Bone - Too Big.

Nose Bone - Extreme Wear.

Chest Bones - signs of t.b.

Finger bones - Extreme Wear.

Hip Bone - Out of Joint.



Jaw Bone - Extreme Wear.

Neck Bone - Stiff.

Arm Bone - Broken.

Back Bone - Missing.

Tail Bone - Extreme Wear.

# AUTOPSY ON A DEAD CHURCH MEMBER

## SITTING IN THE PEW

The lazy man says, “There is a lion outside! I shall be slain in the streets!”

Proverbs 22:13.



# AUTOPSY ON A DEAD CHURCH MEMBER

## SITTING IN THE PEW

**But someone will say, “You have faith, and I have works.” Show me your faith without your works, and I will show you my faith by my works.**



James 2:18.

# AUTOPSY ON A DEAD CHURCH MEMBER

## SITTING IN THE PEW

Who gave Himself for us, that He might redeem us from every lawless deed and purify for Himself His own special people, zealous for good works.



Titus 2:14.

# AUTOPSY ON A DEAD CHURCH MEMBER

Skull Bone - Too Big.

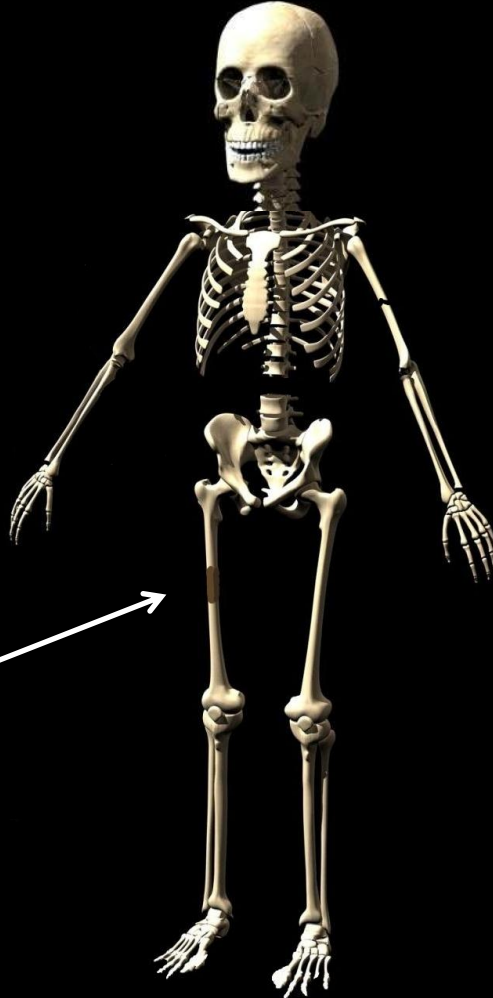
Nose Bone - Extreme Wear.

Chest Bones - signs of t.b.

Finger bones - Extreme Wear.

Hip Bone - Out of Joint.

Rotten Bones.



Jaw Bone - Extreme Wear.

Neck Bone - Stiff.

Arm Bone - Broken.

Back Bone - Missing.

Tail Bone - Extreme Wear.

# AUTOPSY ON A DEAD CHURCH MEMBER

## FULL OF ENVY

**A sound heart is life to the body, But envy is rottenness to the bones.**

Proverbs 14:30.





# AUTOPSY ON A DEAD CHURCH MEMBER

## FULL OF ENVY

**Let us not become conceited, provoking one another, envying one another.**



Galatians 5:26.

# AUTOPSY ON A DEAD CHURCH MEMBER

## FULL OF ENVY

Do not let your heart envy sinners, But be zealous for the fear of the Lord  
all the day;

Proverbs 23:17.



# AUTOPSY ON A DEAD CHURCH MEMBER

Skull Bone - Too Big.

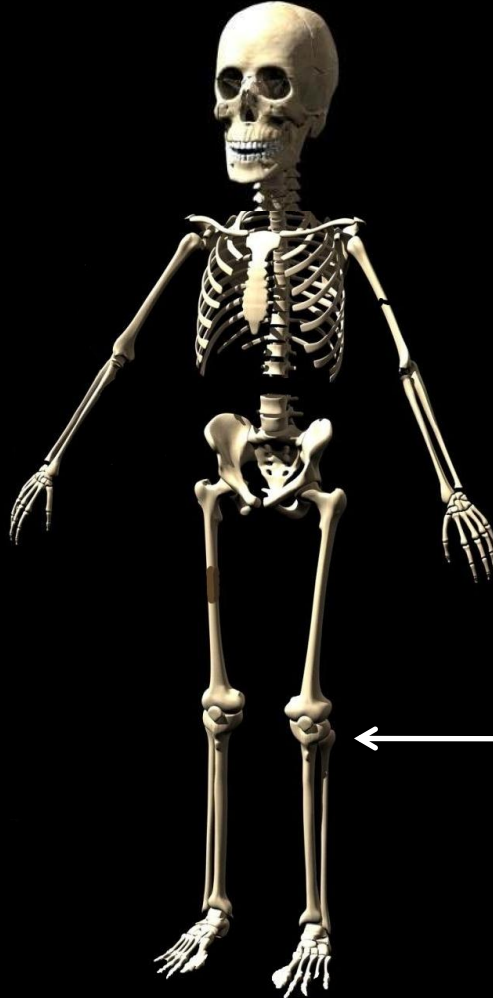
Nose Bone - Extreme Wear.

Chest Bones - signs of t.b.

Finger bones - Extreme Wear.

Hip Bone - Out of Joint.

Rotten Bones.



Jaw Bone - Extreme Wear.

Neck Bone - Stiff.

Arm Bone - Broken.

Back Bone - Missing.

Tail Bone - Extreme Wear.

← Knee Joints - Stiff.

# AUTOPSY ON A DEAD CHURCH MEMBER

## CAN'T BEND THE KNEE

**For this reason I bow my knees to the Father of our Lord Jesus Christ**

**Ephesians 3:14.**



# AUTOPSY ON A DEAD CHURCH MEMBER

## CAN'T BEND THE KNEE

For it is written: “As I live, says the Lord, Every knee shall bow to Me, And every tongue shall confess to God.”



Romans 14:11.

# AUTOPSY ON A DEAD CHURCH MEMBER

Skull Bone - Too Big.

Nose Bone - Extreme Wear.

Chest Bones - signs of t.b.

Finger bones - Extreme Wear.

Hip Bone - Out of Joint.

Rotten Bones.

Feet Bones - Very Ugly. →



Jaw Bone - Extreme Wear.

Neck Bone - Stiff.

Arm Bone - Broken.

Back Bone - Missing.

Tail Bone - Extreme Wear.

Knee Joints - Stiff.

# AUTOPSY ON A DEAD CHURCH MEMBER

## WON'T SPREAD THE GOSPEL

How then shall they call on Him in whom they have not believed? And how shall they believe in Him of whom they have not heard? And how shall they hear without a preacher? <sup>15</sup> And how shall they preach unless they are sent? As it is written: "How beautiful are the feet of those who preach the gospel of peace, Who bring glad tidings of good things!"



Romans 10:14-  
15.

# AUTOPSY ON A DEAD CHURCH MEMBER

## WON'T SPREAD THE GOSPEL

**“Therefore whoever confesses Me before men, him I will also confess before My Father who is in heaven. 33 But whoever denies Me before men, him I will also deny before My Father who is in heaven.**



Matthew 10:32-  
33.



# AUTOPSY ON A DEAD CHURCH MEMBER

Skull Bone - Too Big.

Nose Bone - Extreme Wear.

Chest Bones - signs of t.b.

Finger bones - Extreme Wear.

Hip Bone - Out of Joint.

Rotten Bones.

Feet Bones - Very Ugly.



Jaw Bone - Extreme Wear.

Neck Bone - Stiff.

Arm Bone - Broken.

Back Bone - Missing.

Tail Bone - Extreme Wear.

Knee Joints - Stiff.